

	Round 1	Round 2	Round 3
Square A, make 8 (12) squares	A Yellow	B Lt. Mauve	C Khaki
Square B, make 8 (14) squares	B Lt. Mauve	A Yellow	C Khaki
Square C, make 6 (10) squares	A Yellow	D Mauve	C Khaki
Square D, make 8 (10) squares	B Lt. Mauve	D Mauve	C Khaki
Square E, make 6 (8) squares	D Mauve	A Yellow	C Khaki
Square F, make 6 (10) squares	D Mauve	B Lt. Mauve	C Khaki

Figure 1

BASIC GRANNY SQUARE

Do not turn after rnds; RS is facing at all times.

With first color, ch 4. Join with a sl st to form a ring.

Rnd 1 (RS): Ch 3 (counts as dc), 3 dc in ring; * ch 3, 3 dc in ring; repeat from * twice more, ch 3, join with a sl st in 3rd ch of beg ch-3. Fasten off.

Rnd 2: With the RS facing, join second color with a sl st to first ch-3 sp of previous rnd. Ch 3 (counts as dc), in same sp (3 dc, ch 3, 3 dc); * ch 1, sk next 3 dc, (3 dc, ch 3, 3 dc) into next ch-3 sp; repeat from * around, ending with ch 1, sk next 3 dc, join with a sl st in 3rd ch of beg ch-3. Fasten off.

Rnd 3: With the RS facing, join third color with a sl st to first ch-3 sp of previous rnd. Ch 3 (counts as dc), in same sp (3 dc, ch 3, 3 dc); * ch 1, sk next 3 dc, 3 dc into next ch-1 sp, ch 1, sk next 3 dc, (3 dc, ch 3, 3 dc) into next ch-3 sp; repeat from * around, ending rnd with ch 1, sk next 3 dc, 3 dc into next ch-1 sp, ch 1, sk next 3 dc, join with a sl st in 3rd ch of beg ch-3. Fasten off.

INSTRUCTIONS

Using the Basic Granny instructions above, make 42 (64) squares as shown in Figure 1.

FINISHING

Refer to Figure 2 for placement of squares. With RSs facing you, whip-stitch squares together through back loops.

Figure 2 shows placement of squares for the front; the back is identical. The red squares are for the larger size only.

When working the post stitch ribbing around the neck, BPdc3tog if the last st before the decrease was a FPdc; FPdc3tog if the last st before the

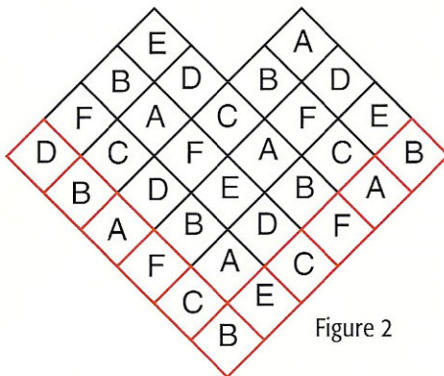


Figure 2

decrease was a BPdc. Then, the next stitch after the decrease will be the same as the last stitch before the decrease.

NECKLINE: With RS facing, attach C with a sl st to any corner of neckline and ch 1.

Rnd 1: Work 55 sc along each side with 1 sc in each point of V-neck = 112 sts; join with a sl st in first sc.

Rnd 2: Ch 1, sc around neck, working sc3tog in each point of V-neck — 108 remaining sts; join with a sl st in first sc.

Rnd 3: Ch 3, dc in each sc around, working dc3tog in each point of V-neck — 104 remaining sts; join with a sl st in 3rd ch of beg ch-3.

Rnd 4: Ch 3 (counts as dc); * FPdc over next dc, BPdc over next dc; repeat from * around, working post dc3tog in each point of V-neck — 100 remaining sts. Join with a sl st in 3rd ch of beg ch-3.

Rnd 5: Rep Rnd 4 — 96 remaining sts.

Rnd 6: Rep Rnd 4 — 92 remaining sts. Fasten off.

LOWER EDGE TRIM: With RS facing, attach C with a sl st to any lower corner and ch 1.

Rnd 1: 3 sc in corner, sc in each ch-sp, dc, and joining, working 1 sc in sp

before and after joining. Continue around, working 3 sc into opposite corner — 280 (334) sts; join with a sl st in first sc.

Rnd 2: Ch 1, sc into each sc around, working 3 sc into center sc at each corner — 284 (338) sts; join with a sl st in first sc.

Rnd 3: Ch 3, dc into each sc around, working 3 dc into center sc at each corner — 288 (342) sts; join with a sl st in 3rd ch of beg ch-3.

Rnd 4: Ch 3, * FPdc over next dc, BPdc over next dc, * 3 FPdc over next dc for corner, (BPdc over next dc, FPdc over next dc) across to next corner, ending BPdc over last dc before corner. Repeat from * around, ending BPdc over next dc, FPdc over next dc; join with a sl st in 3rd ch of beg ch-3 — 292 (346) sts.

Rnd 5: Ch 3, * (FPdc over FPdc, BPdc over BPdc) around. In each corner FPdc over first FPdc, 3 FPdc over next FPdc, and FPdc over next FPdc. Rep from * around; at end, join with a sl st in 3rd ch of beg ch-3 — 296 (350) sts.

Rnd 6: Ch 3, * (FPdc over FPdc, BPdc over BPdc) around. In each corner FPdc over next 2 FPdc, 3 FPdc over next FPdc, FPdc over next 2 FPdc. Rep from * around; at end, join with a sl st in 3rd ch of beg ch-3 — 300 (354) sts. Fasten off.

Melissa Leapman teaches popular needlework workshops across the country, and has been a featured guest on HGTV's "Sew Much More" and Lifetime TV's "Handmade by Design." See her other designs on pages 51, 61, and 98.