

X DMC B'STANC. COLOR

- 208 110 Lavender-DK
- 310 403 Black
- 327 100 Violet-DK
- 333 119 Blue Violet-DK
- 333# 119 Blue Violet-DK
- 333* 119 Blue Violet-DK
- 351 10 Coral
- 402 1047 Mahogany-LT
- 434 310 Brown-LT
- 452 232 Shell Gray-MD
- 453 231 Shell Gray-LT
- 472 253 Avocado Green
- 503 876 Blue Green-MD
- 504 (1) 1042 Blue Green-LT
- 964 (1) 185 Sea Green-LT
- 535 400 Ash Gray-LT
- 553 98 Violet
- 720 326 Orange Spice
- 721 (1) 324 Orange Spice-MD
- 3854 (1) 1047 Autumn Gold-MD
- 738 361 Tan-LT
- 743 (1) 302 Yellow-MD
- 3854 (1) 1047 Autumn Gold-MD
- 745 300 Yellow-LT Pale
- 793 176 Cornflower Blue
- 839 360 Beige Brown-DK
- 841 378 Beige Brown-LT
- 907 255 Parrot Green-LT
- 975 355 Golden Brown
- 3013 842 Khaki Green-LT
- 3051 681 Green Gray-DK
- 3325 129 Baby Blue-LT
- 3363 262 Pine Green-MD
- 3726 1018 Antique Mauve
- 3776 1048 Mahogany-LT
- 3799 236 Pewter Gray
- ☆ White 2 White

TOP 1

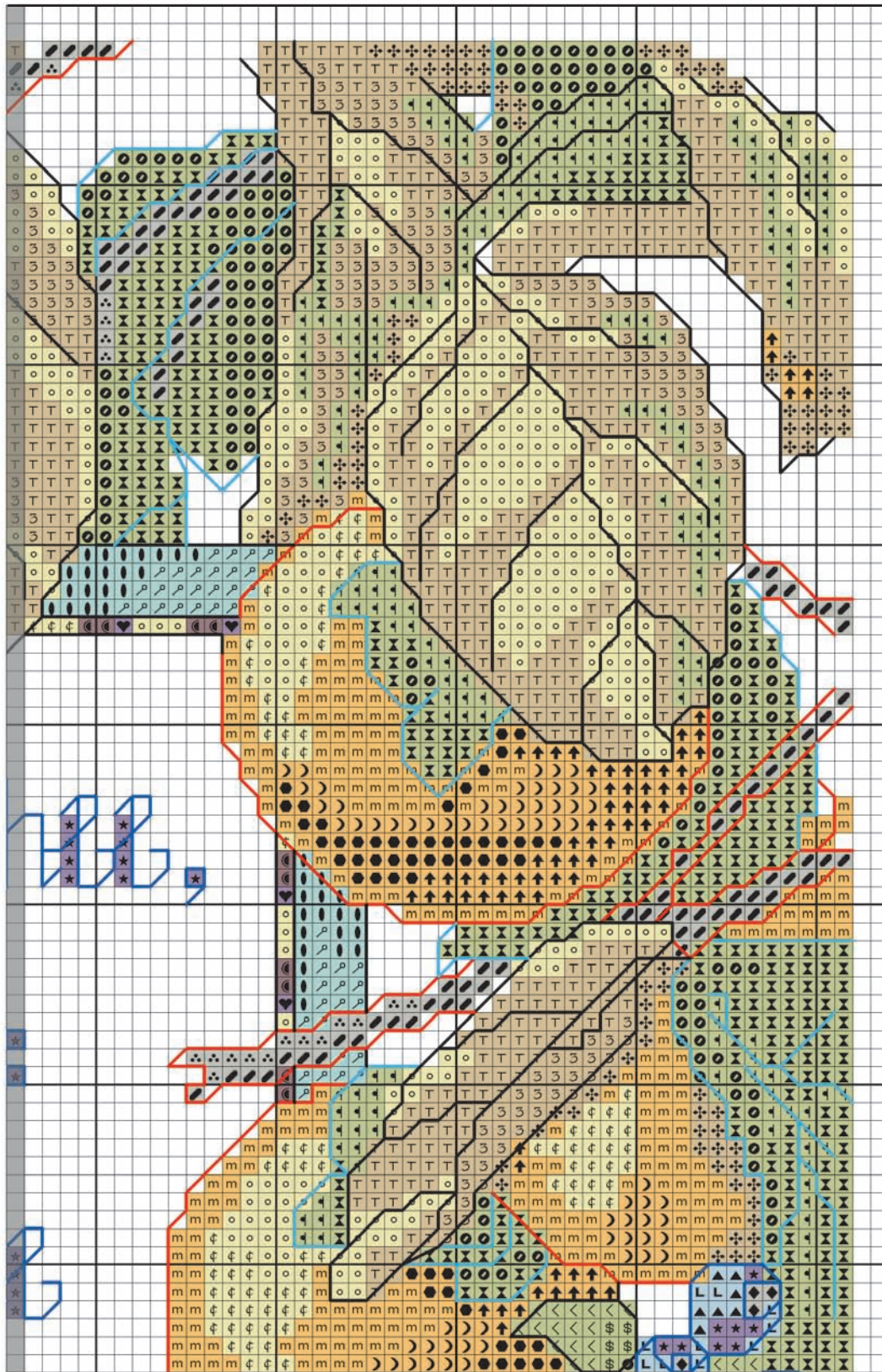
**BLESS THEE AND
KEEP THEE
(140W X 224H)**

11 count 12½w x 20½h
14 count 10w x 16h
18 count 7½w x 12½h

Note: To correct your printed copy, the backsitch symbols for #333 (2 strands) and #3051 should be switched.

* French Knot (3 strands)
Backstitch (3 strands)

Shaded area indicates last row of previous section.



TOP 3

Note: To correct your printed copy, the backsitch symbols for #333 (2 strands) and #3051 should be switched.

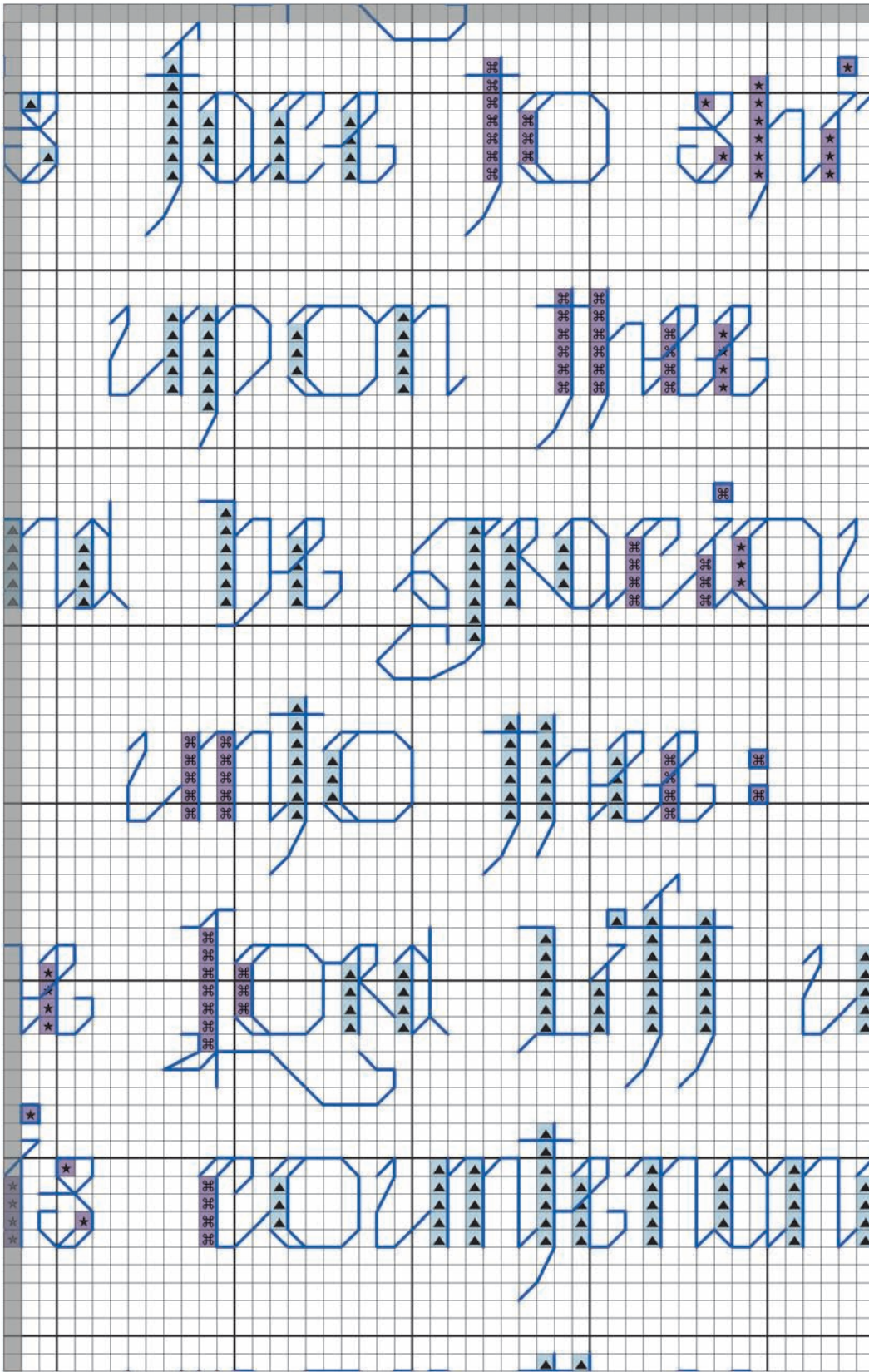
**BLESS THEE AND
KEEP THEE
(140W X 224H)**
11 count 12%w x 20%h
14 count 10w x 16h
18 count 7%w x 12%h

X DMC B'STANC. COLOR

- 208 110 Lavender-DK
- 310 403 Black
- 327 100 Violet-DK
- 333 119 Blue Violet-DK
- 333# 119 Blue Violet-DK
- 333* 119 Blue Violet-DK
- 351 10 Coral
- 402 1047 Mahogany-LT
- 434 310 Brown-LT
- 452 232 Shell Gray-MD
- 453 231 Shell Gray-LT
- 472 253 Avocado Green
- 503 876 Blue Green-MD
- 504 (1) 1042 Blue Green-LT
- 964 (1) 185 Sea Green-LT
- 535 400 Ash Gray-LT
- 553 98 Violet
- 720 326 Orange Spice
- 721 (1) 324 Orange Spice-MD
- 3854 (1) 1047 Autumn Gold-MD
- 738 361 Tan-LT
- 743 (1) 302 Yellow-MD
- 3854 (1) 1047 Autumn Gold-MD
- 745 300 Yellow-LT Pale
- 793 176 Cornflower Blue
- 839 360 Beige Brown-DK
- 841 378 Beige Brown-LT
- 907 255 Parrot Green-LT
- 975 355 Golden Brown
- 3013 842 Khaki Green-LT
- 3051 681 Green Gray-DK
- 3325 129 Baby Blue-LT
- 3363 262 Pine Green-MD
- 3726 1018 Antique Mauve
- 3776 1048 Mahogany-LT
- 3799 236 Pewter Gray
- White 2 White

* French Knot (3 strands)
Backstitch (3 strands)

Shaded area indicates last row of previous section.



MIDDLE 5

**BLESS THEE AND
KEEP THEE
(140W X 224H)**

11 count 12½w x 20½h
14 count 10w x 16h
18 count 7½w x 12½h

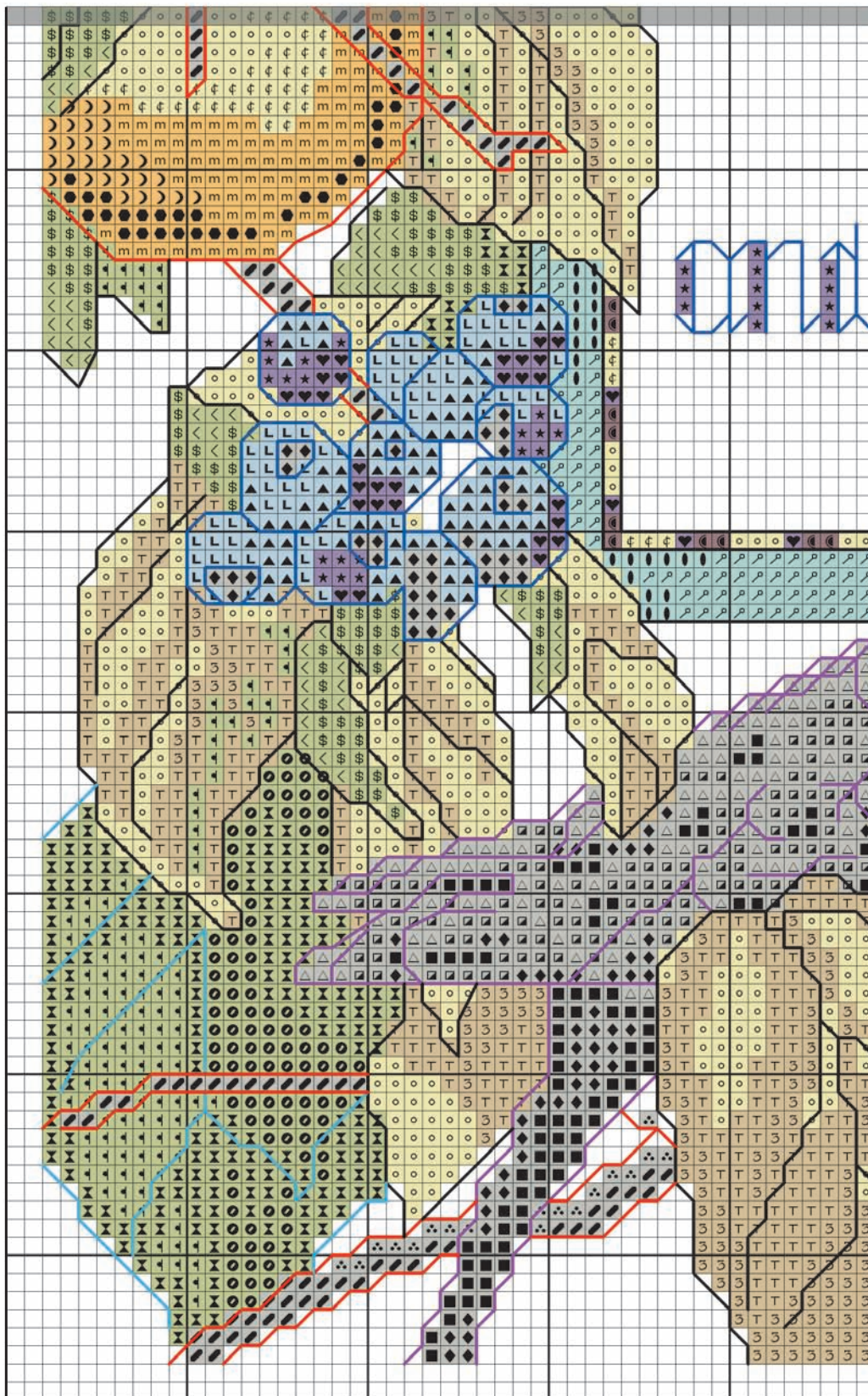
Note: To correct your printed copy, the
backsitch symbols for #333 (2 strands)

X DMC B'STANC. COLOR

☼	208	110	Lavender-DK
■	310	403	Black
♥	327	100	Violet-DK
	333	119	Blue Violet-DK
	333#	119	Blue Violet-DK
	333*	119	Blue Violet-DK
☽	351	10	Coral
♁	402	1047	Mahogany-LT
	434	310	Brown-LT
△	452	232	Shell Gray-MD
+	453	231	Shell Gray-LT
◀	472	253	Avocado Green
♣	503	876	Blue Green-MD
⌋	504 (1)	1042	Blue Green-LT
	964 (1)	185	Sea Green-LT
▣	535	400	Ash Gray-LT
★	553	98	Violet
⬢	720	326	Orange Spice
m	721 (1)	324	Orange Spice-MD
	3854 (1)	1047	Autumn Gold-MD
T	738	361	Tan-LT
⊕	743 (1)	302	Yellow-MD
	3854 (1)	1047	Autumn Gold-MD
○	745	300	Yellow-LT Pale
▲	793	176	Cornflower Blue
⬛	839	360	Beige Brown-DK
⊙	841	378	Beige Brown-LT
♁	907	255	Parrot Green-LT
⬆	975	355	Golden Brown
◀	3013	842	Khaki Green-LT
⊙	3051	681	Green Gray-DK
L	3325	129	Baby Blue-LT
⊗	3363	262	Pine Green-MD
⊙	3726	1018	Antique Mauve
⊕	3776	1048	Mahogany-LT
◆	3799	236	Pewter Gray
☆	White	2	White

* French Knot (3 strands)
Backstitch (3 strands)

Shaded area indicates last row of previous section.



X DMC B'STANC. COLOR

- ☼ 208 110 Lavender-DK
- 310 403 Black
- ♥ 327 100 Violet-DK
- 333  119 Blue Violet-DK
- 333#  119 Blue Violet-DK
- 333*  119 Blue Violet-DK
- ☽ 351 10 Coral
- 5 402 1047 Mahogany-LT
- 434  310 Brown-LT
- △ 452 232 Shell Gray-MD
- + 453 231 Shell Gray-LT
- < 472 253 Avocado Green
- 503 876 Blue Green-MD
- 504 (1)  1042 Blue Green-LT
- 964 (1)  185 Sea Green-LT
- 535 400 Ash Gray-LT
- ★ 553 98 Violet
- 720 326 Orange Spice
- m { 721 (1) 324 Orange Spice-MD
- 3854 (1) 1047 Autumn Gold-MD
- T 738 361 Tan-LT
- φ { 743 (1) 302 Yellow-MD
- 3854 (1) 1047 Autumn Gold-MD
- 745 300 Yellow-LT Pale
- ▲ 793 176 Cornflower Blue
- 839  360 Beige Brown-DK
- ⊕ 841 378 Beige Brown-LT
- ⌘ 907 255 Parrot Green-LT
- ↑ 975 355 Golden Brown
- 3013 842 Khaki Green-LT
- 3051  681 Green Gray-DK
- L 3325 129 Baby Blue-LT
- X 3363 262 Pine Green-MD
- 3726 1018 Antique Mauve
- ⊕ 3776 1048 Mahogany-LT
- ◆ 3799  236 Pewter Gray
- ☆ White 2 White

BOTTOM 7

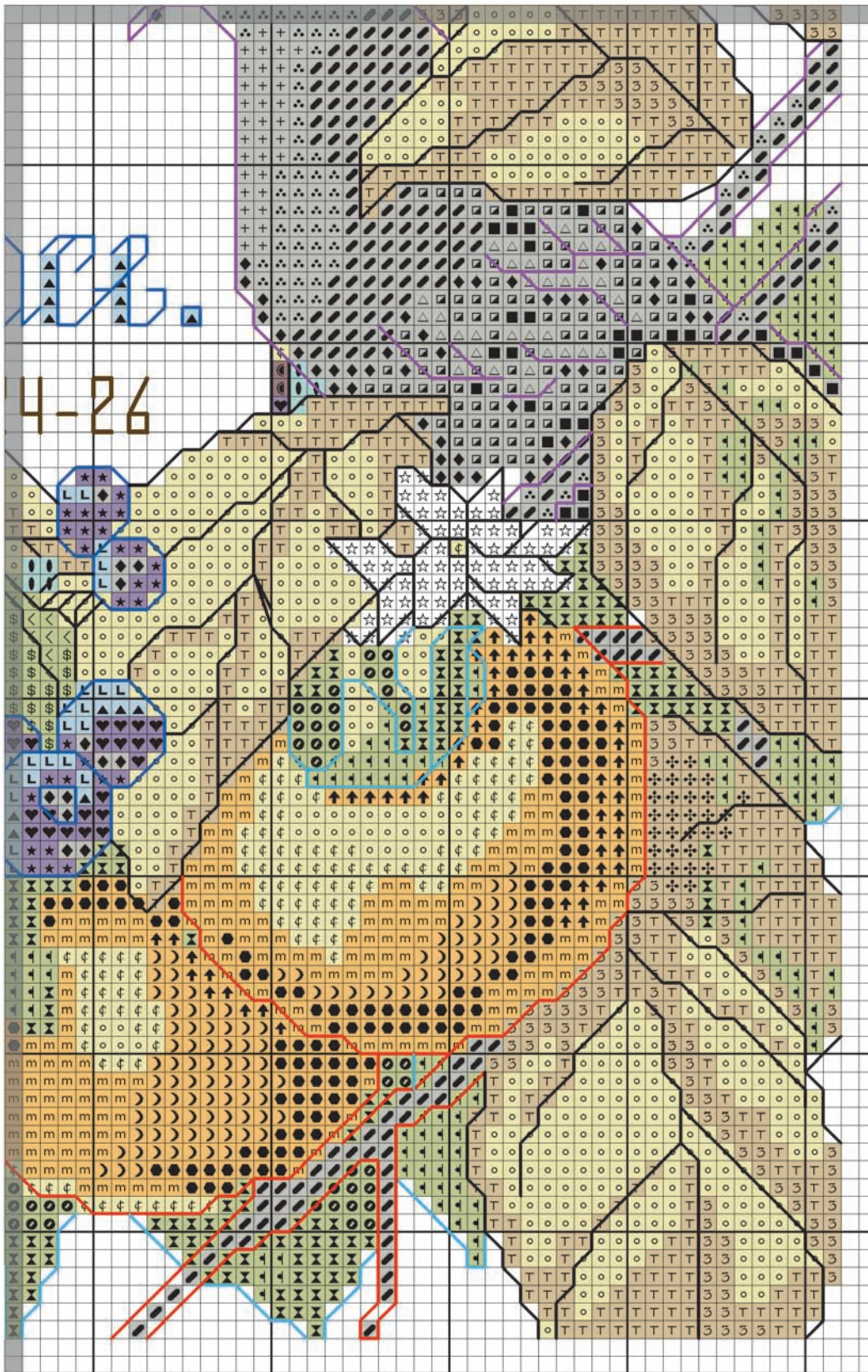
**BLESS THEE AND
KEEP THEE
(140W X 224H)**

11 count 12%w x 20%h
14 count 10w x 16h
18 count 7%w x 12%h

Note: To correct your printed copy, the backsitch symbols for #333 (2 strands) and #3051 should be switched.

* French Knot (3 strands)
Backstitch (3 strands)

Shaded area indicates last row of previous section.



BOTTOM 9

Note: To correct your printed copy, the backsitch symbols for #333 (2 strands) and #3051 should be switched.

**BLESS THEE AND
KEEP THEE
(140W X 224H)**
11 count 12½w x 20½h
14 count 10w x 16h
18 count 7½w x 12½h

- X DMC B'STANC. COLOR**
- 208 110 Lavender-DK
 - 310 403 Black
 - 327 100 Violet-DK
 - 333 119 Blue Violet-DK
 - 333# 119 Blue Violet-DK
 - 333* 119 Blue Violet-DK
 - 351 10 Coral
 - 402 1047 Mahogany-LT
 - 434 310 Brown-LT
 - 452 232 Shell Gray-MD
 - 453 231 Shell Gray-LT
 - 472 253 Avocado Green
 - 503 876 Blue Green-MD
 - 504 (1) 1042 Blue Green-LT
 - 964 (1) 185 Sea Green-LT
 - 535 400 Ash Gray-LT
 - 553 98 Violet
 - 720 326 Orange Spice
 - 721 (1) 324 Orange Spice-MD
 - 3854 (1) 1047 Autumn Gold-MD
 - 738 361 Tan-LT
 - 743 (1) 302 Yellow-MD
 - 3854 (1) 1047 Autumn Gold-MD
 - 745 300 Yellow-LT Pale
 - 793 176 Cornflower Blue
 - 839 360 Beige Brown-DK
 - 841 378 Beige Brown-LT
 - 907 255 Parrot Green-LT
 - 975 355 Golden Brown
 - 3013 842 Khaki Green-LT
 - 3051 681 Green Gray-DK
 - 3325 129 Baby Blue-LT
 - 3363 262 Pine Green-MD
 - 3726 1018 Antique Mauve
 - 3776 1048 Mahogany-LT
 - 3799 236 Pewter Gray
 - ☆ White 2 White

* French Knot (3 strands)
Backstitch (3 strands)